

## 13 YEARS OF INNOWOOD

INNOWOOD is an Australian company dedicated to environmental protection through the development and design of innovative composite wood products that are a sustainable alternative to natural timber.

INNOWOOD products are predominately made from wood waste, helping to prevent depletion of forests through the sustainable use of renewable materials and energy management.



Low  
Emission



Water  
Resistance



UV  
Resistance



Termite  
Resistance



Fire  
Retardant



Thermal  
Resistance



100%  
Recyclable



Acoustic  
Performance

## INNOWOOD COMPOSITE MATERIAL

INNOWOOD uses a sustainable new high-tech ingredient and finishing process to achieve a wood grain texture to be the closest match to the look of natural timber, making it a sustainable timber alternative.

INNOWOOD is an advanced composite material that utilizes the latest extrusion technology to convert recycled wood powder and resin material into various profiles to suit a variety of applications.

The new high-tech ingredient also makes the Innowood material Termite, mildew and water resistant, with the further advantage of not splitting, cracking or rotting over time. Being a highly durable material, INNOWOOD remains the market leader for composite timber and serves as a sustainable environmentally friendly choice for architects, designers and end users.





## INNOWOOD IS A SUSTAINABLE AND ENVIRONMENTALLY RESPONSIBLE PRODUCT FIT FOR THE CHALLENGING BUILT ENVIRONMENT OF TODAY

---

Over the past years, we have conducted various tests through third parties testing authorities from CSIRO, SGS, AWTA, CETEC, INTERTEK, University of Sydney and University of Western Sydney to certify the capabilities, and to have the qualities of being a fire retardant with the quality of absorbing very little moisture, a 100 % recyclable and nontoxic product.





## LIFE CYCLE ASSESSMENT

---

**Innowood has been audited and assessment by third party authorities is now Environmental product declaration (EPD) registered,** this assessment is a verified document that reports environmental data of products based on life cycle assessment (LCA) and other relevant information, in accordance with the international standard ISO 14025 (Type III) Environmental Declarations



**CODEMARK AUSTRALIA CERTIFIED**

---

INNOWOOD is pleased to announce that, InnoClad and InnoScreen is now officially Codemark certified by CertMark International (CMI) and 3rd party accredited certification body (ISO 17065).



## GREEN BUILDING COUNCIL AUSTRALIA MEMBER

---

INNOWOOD is a member of the Green Building Council of Australia since 2010.



## TOP 100 TRUSTED BRAND

---

INNWOOD Australia has been recognized as being amongst the Top 100 trusted brands in for Architecture & Design 2016 survey and this is the third consecutive time for INNWOOD Australia to achieve this.





# THE INNOWOOD PRODUCT SYSTEM PROVIDES A TOTAL ARCHITECTURAL SOLUTION FOR RESIDENTIAL AND COMMERCIAL APPLICATIONS

INNOWOOD technical team lead the design and development of complete systems resulting improvement and innovation of new composite wood products. INNOWOOD R&D Team is highly capable of providing technical support and product solutions to architects, designers and builders.





## WHY INNOWOOD?

INNWOOD technical team has designed and developed a range of product systems based on Innwood material properties, Innwood product system are flexible to design, lightweight solution, easy to install and suitable for use in indoor & outdoor environment.

Innwood material is resistant to termites, water & fire, durable, requires low maintenance and it can also be used to improve the energy efficiency that in turn dramatically lower the long-term costs and reduce the carbon footprint of the buildings.

<https://innwood.com/environmental-friendly-product/>



## INNOWOOD COMPOSITE PRODUCT AND SYSTEM RANGE

Since 2005, our expert technical team has designed and developed a range of product systems based on Innowood's material characteristic. Innowood product systems are flexible in design, lightweight, easy to install and suitable for use in both indoor & outdoor applications. Innowood product systems can also be used to improve the energy efficiency that in turn dramatically lower the long term costs and reduce the carbon footprint of the buildings.



# INNOWOOD COMPOSITE PRODUCT AND SYSTEM RANGE



**01**

CLADDING



FLAT JOINT FIXING

SHIPLAP FIXING

SECRET FIXED SHIPLAP



**02**

INTERNAL LINING

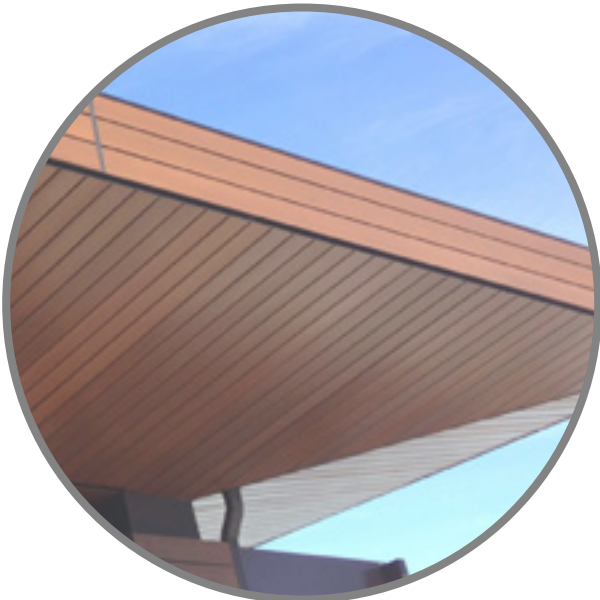


V - JOINT SHIPLAP

SECRET FIXED SHIPLAP

CONCEALED CLIP FIXING

DIRECT FIXING



**03**

CEILING

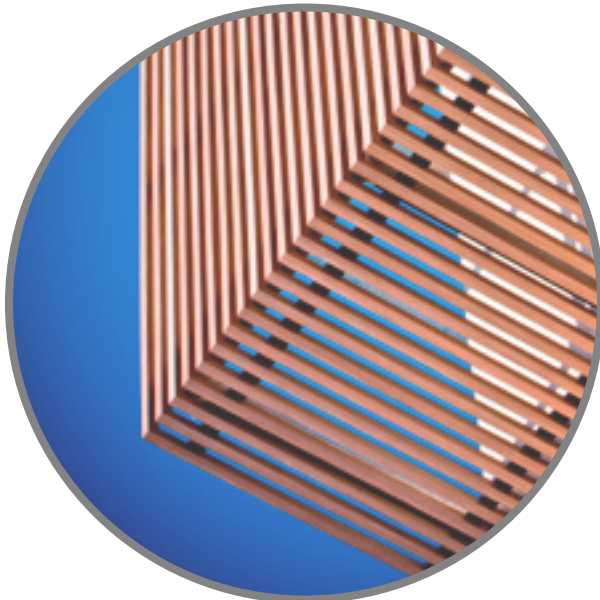


CONCEALED CLIP FIXING

SHIPLAP CEILING

SLATTED CEILING

SUSPENDED CLICK ON



**04**

SCREENING



CONCEAL LOCK ON FIXING

DIRECT FACE FIXING



**05**

SOL'ART SHADING



SOL'ART FIXED

SOL'ART OPERABLE – MANUAL

SOL'ART OPERABLE – MOTORISED

SOL'ART CILUM FOLDING LOUVRE



**06**

DECKING



FIBRE DECK SYSTEM





# INNOWOOD CLADDING

INNOWOOD Cladding is an architectural composite wood cladding system that enhances the look and feel of any outdoor façades and internal linings. InnoClad is Ideal for any new buildings or renovations and InnoClad is suitable for residential and commercial in both indoor & outdoor applications.

## EXTERNAL CLADDING SYSTEM

INNOWOOD external cladding system comes in your choice of Shiplap, Concealed Clip Fixing and Flat Joint cladding systems. With the flexibility to orientate vertically or horizontally, INNOWOOD external cladding systems deliver a clean finish with consistently spaced shadow/join lines.

[MORE PRODUCT INFO](#)



## INNOWOOD EXTERNAL CLADDING

### FLAT JOINT – CONCEALED FIXING SYSTEM

INNOWOOD's InnoClad Flat Joint cladding system is designed with a fixing system which incorporates a continuous aluminium connection. This system allows either the conventional single profile that creates a uniform cladding finish or the mixing and matching of three different profile sizes to create a unique cladding feature.

PROJECT GALLERY





## INNWOOD EXTERNAL CLADDING

### V – JOINT SHIPLAP – CLADDING SYSTEM

INNWOOD's V Joint Shiplap Cladding system comes in 25 mm thick boards with 'V' shaped tongue and groove shadow line rebated joints. INNWOOD V Joint Shiplap boards overlap one another, concealing the fixing and locking in the boards to give a clean finish with effective board coverages of 105mm, 165mm and 205mm. These profiles can be mixed and matched to achieve varying board widths, creating a unique architectural feature.

[PROJECT GALLERY](#)



## INNOWOOD EXTERNAL CLADDING

### SECRET FIXED SHIPLAP – CLADDING SYSTEM

INNOWOOD Secret Fixed Shiplap Cladding system is available in board thicknesses of 33mm that delivers concave and convex shaped boards that utilises tongue and groove shadow line rebated joints. Our Secret Fixed Shiplap boards overlap one another concealing the fixing and locking in the boards to give a clean finish with board coverage of 150mm.

PROJECT GALLERY





## INTERNAL LINING SYSTEM

INNOWOOD internal linings systems designed with tongue and groove shiplap joint, the edges of the joint on the exposed face are chamfered to create a “V” shiplap system, can be also select as board and board with “clip” concealed fixed system for internal walls, balconies or eaves at the joists/battens.

[MORE PRODUCT INFO](#)





## INTERNAL LINING SYSTEM

### V – JOINT SHIPLAP

V Joint Shiplap boards overlap one another concealing the fixing and locking in the boards to give a clean finish with effective board coverage of 140mm or 170mm.



### SECRET FIXED SHIPLAP

Secret Fixed Shiplap Internal Lining boards overlap one another concealing the fixing nails and locking in the boards to give a clean finish with an effective board coverage of 148mm, 194mm or 250mm.

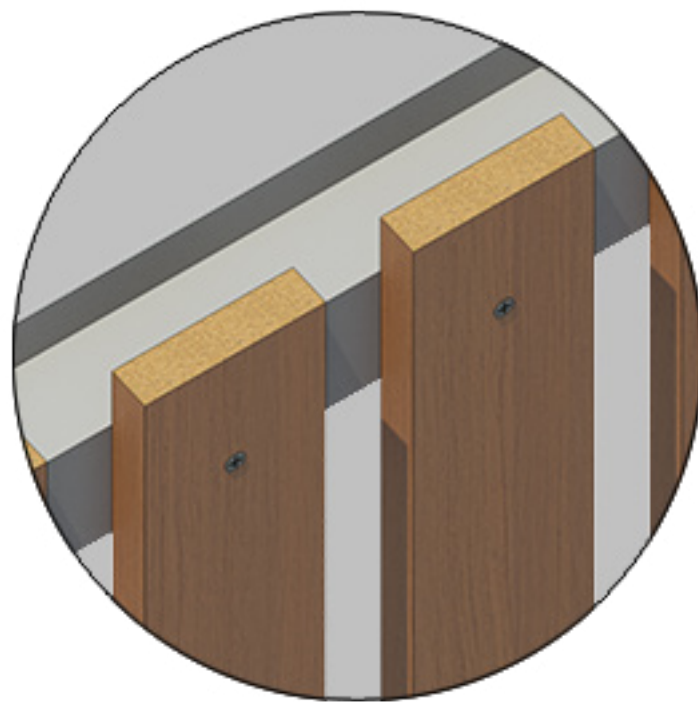
PROJECT GALLERY



## INTERNAL LINING SYSTEM

### CONCEALED CLIP FIXING

INNOWOOD Concealed Clip Fixing system uses an aluminium clip to join two boards together and fix to the back structure in order to achieve the perfect straight line look.



### DIRECT FIXING

INNOWOOD Direct Fixing system with traditional fixings are a stylish addition to any interior space or fit out.

[PROJECT GALLERY](#)





## INNOWOOD CEILING

INNOCEIL SYSTEMS OFFER THE IDEAL TIMBER LOOK  
CEILING SOLUTION FOR ANY COMMERCIAL OR RESIDENTIAL  
APPLICATION

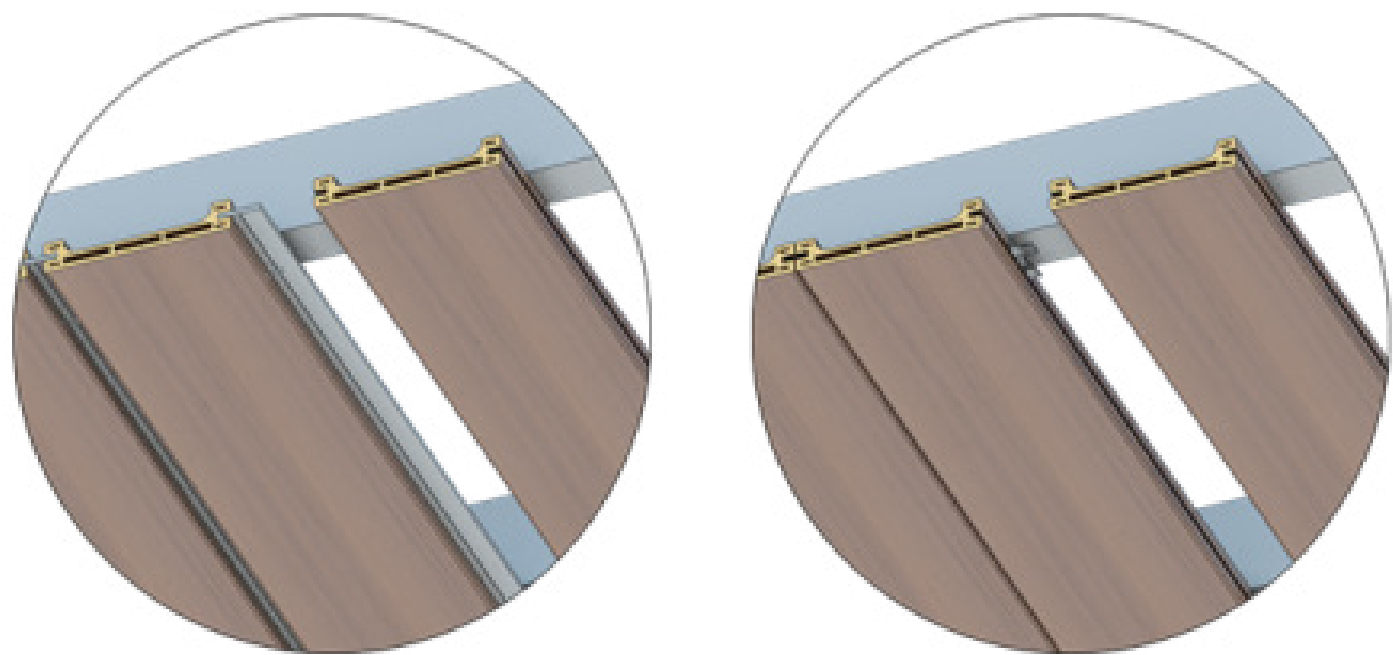
INNOWOOD ceilings are considered as innovative ceiling solutions as they provide a real timber look and greatly enhances the appearance of any building. INNOWOOD ceiling systems offer the ideal ceiling solution for any commercial or residential application.

[MORE PRODUCT INFO](#)

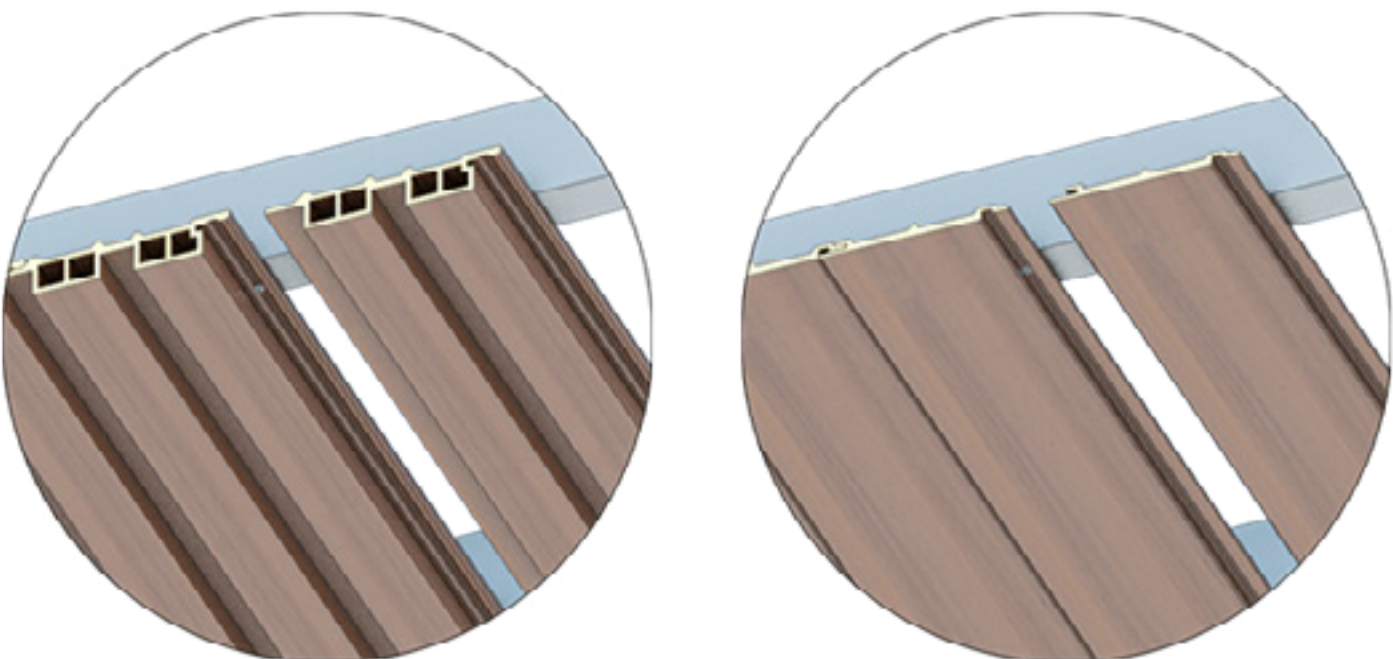


# INNWOOD CEILING SYSTEM

## CONCEALED CLIP FIXING CEILING SYSTEM



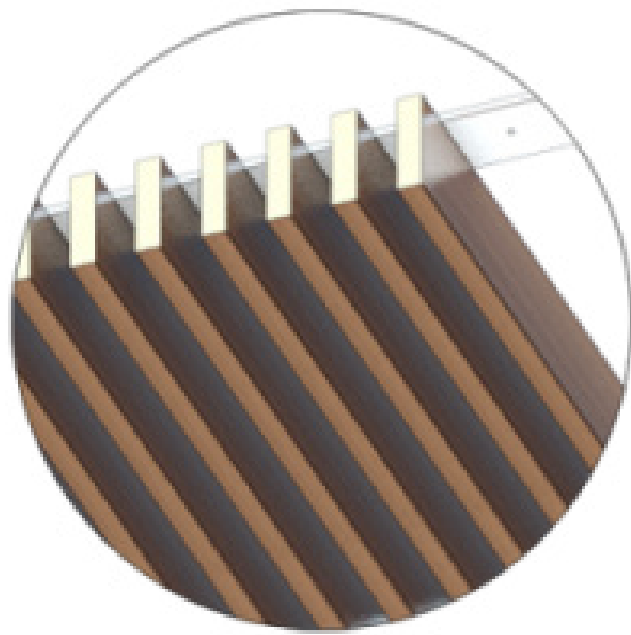
Our Concealed Clip Fixing Ceiling System utilises a stainless-steel clip attached to each profile and screwed to the ceiling substrate without exposed fixings. The system is easy to install and delivers consistent shadow lines between the boards for a smart uniform look.



## SHIPLAP CEILING

Based on a traditional tongue and groove design, INNWOOD Shiplap Ceiling System creates a clean finish with uniform joints but without any visible fixings.

[PROJECT GALLERY](#)



# INNOWOOD CEILING SYSTEM

## SLATTED CEILING

INNOWOOD Slatted Ceiling System produces clean straight lines that can vary in density and frequency from slat to slat with batten coverage as narrow as 16mm and spacing to suit any design, all in a wide range of configurations.



## SUSPENDED CLICK ON

INNOWOOD Suspended Click-On Fixing Ceiling System works on the principle of clipping the InnoCeil profile onto its suspended carrier to secure it in the desired position. This system is available in different sizes to suit most design requirements. The lightweight suspended Click-On system is perfect for areas where structural loads are critical. And with the Click-on system, installing and replacing the battens is easy

PROJECT GALLERY





## INNOWOOD SCREEN

InnoScreen systems offer an exciting, flexible and versatile alternative to conventional facade designs. With the look and feel of real timber, they add a warm, natural and stylish look to enhance the appearance of any conventional wall, soffit or ceiling treatment.

InnoScreen systems deliver multiple benefits over real timber. They are ideal for internal and external use in both commercial and residential settings and are easy to install, saving time and money.

INNOWOOD's multi-function InnoScreen systems can be used to create shade and optimise natural light while simultaneously providing privacy and security

[MORE PRODUCT INFO](#)

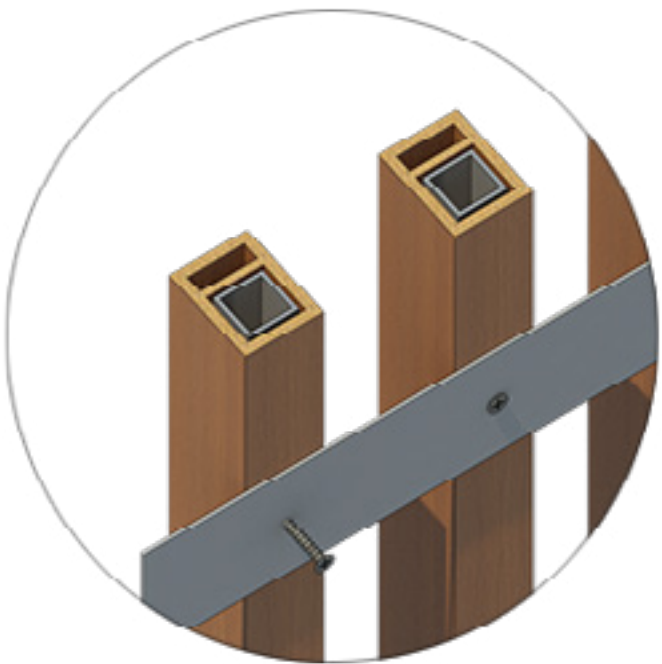




# INNOWOOD SCREEN SYSTEM

## CONCEAL LOCK ON FIXING SYSTEM

InnoScreen's Concealed Lock-in Fixing System creates a perfectly straight line with battens that simply lock into place, concealing the single-part rear clip that can be set out to any desired spacing.



## DIRECT FACE FIXING SYSTEM

InnoScreen's Face Fixing & real Fixing System is a traditional direct fixing method whereby battens are face-fixed or back – fixed directly through the profile to achieve traditional visible fixings and a familiar installation technique. InnoScreen Face Fixing Systems and Rear fixing systems are also finished on all faces for applications where the batten is visible on both sides of the installation.

PROJECT GALLERY





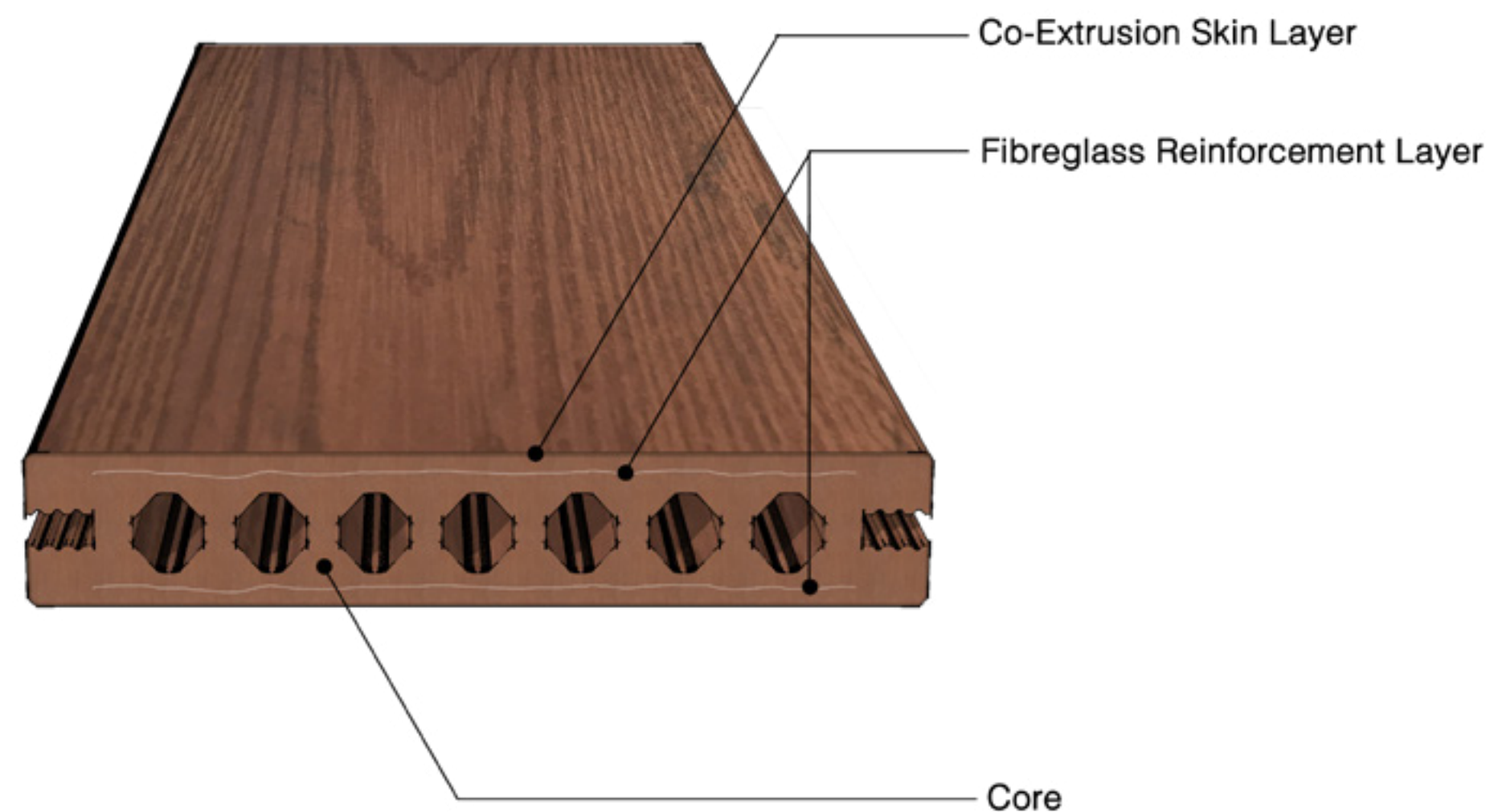
## INNOWOOD DECKING

INNOWOOD'S Decking solutions are lightweight for significant cost savings, environmentally friendly, low maintenance, fire resistant, non-slip and highly durable.

INNOWOOD Decking looks and feels like natural timber but delivers superior performance, with none of natural timber's challenges. Available in two options, InnoDeck and InnoTiles.

[MORE PRODUCT INFO](#)





# INNOWOOD DECKING

## INNOWOOD PREMIUM FIBRE DECK SYSTEM

INNOWOOD Premium Fibre Deck with Smart Clip Fixing System utilises hidden connectors slotted into grooves along the sides of the decking board profile which are fixed down to joists or battens. The system provides a clean hidden fixing surface. This patented technology enhances the rigidity, durability and toughness of the decking board to achieve better performance by significantly minimising the board movement at different temperature.

PROJECT GALLERY





## INNOWOOD SHADING

### INNOWOOD SOL'ART SHADING SYSTEM ENHANCES THE BUILDING VENTILATION GREATLY.

INNOWOOD's architecturally designed SOL'ART Shading Systems included fixed Louvre, manually operated Louvre, motorised Louvre, folding Louvre, facilitate the control of direct sunlight enhance a building environment by creating shade, privacy and increased thermal comfort but also significantly improve the energy efficiency, to increase thermal comfort ideal for both commercial and residential applications.

[MORE PRODUCT INFO](#)





# SOL'ART SHADING SYSTEM

## SOL'ART LOUVRE FIXED

INNWOOD's architecturally designed SOL'ART Shading Systems included fixed Louvre, manually operated Louvre, motorised Louvre, folding Louvre, facilitate the control of direct sunlight enhance a building environment by creating shade, privacy and increased thermal comfort but also significantly improve the energy efficiency, to increase thermal comfort ideal for both commercial and residential applications.

PROJECT GALLERY



# SOL'ART SHADING SYSTEM

## SOL'ART LOUVRE OPERABLE – MANUAL

Our manually operable louvre systems are easily controlled by hand adjusting the angle of the blades. This is done with ease thanks to our high-quality pivots that move only when and how desired.

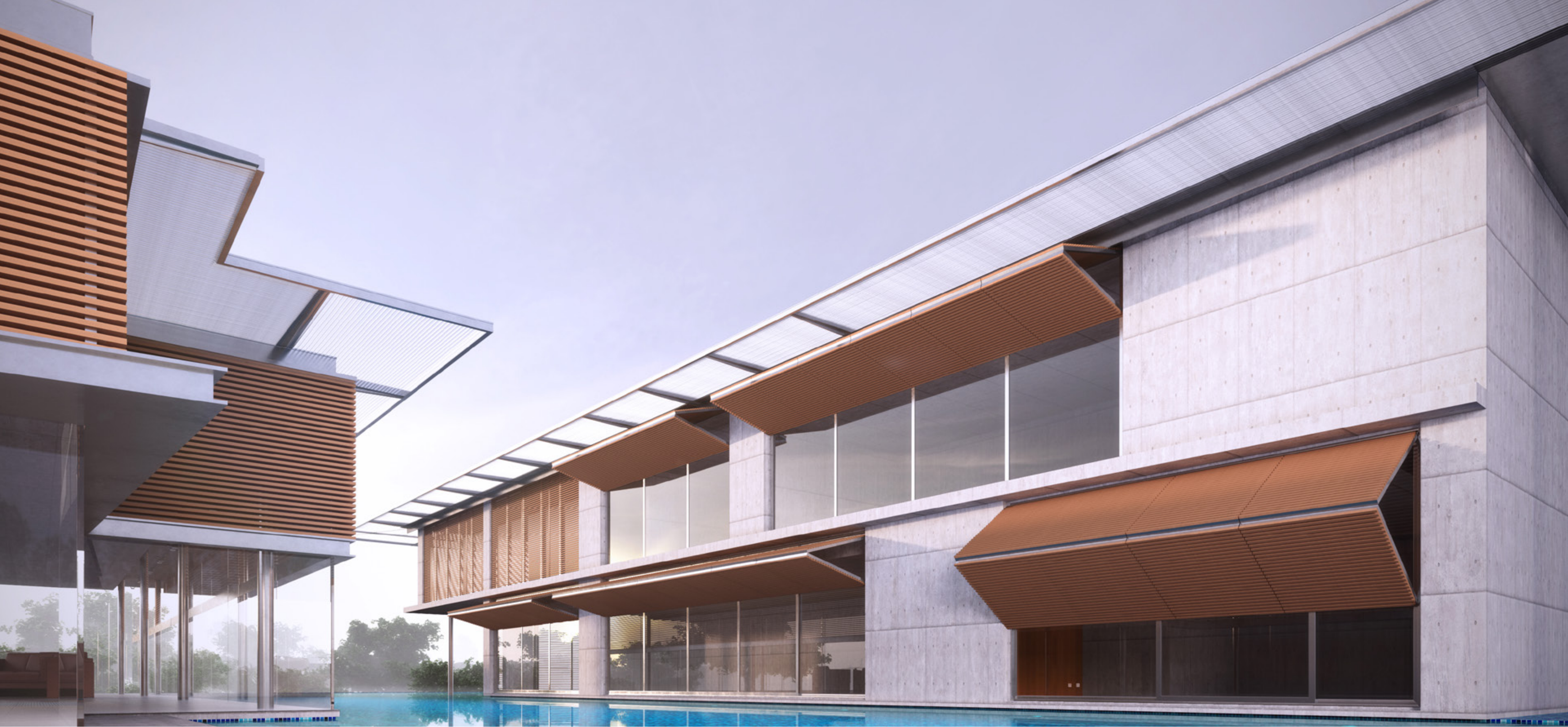


## SOL'ART LOUVRE OPERABLE – MOTORISED

SOL'ART Motorised Louvre Systems allow the blades to be adjusted automatically, either via: A simple flick of a switch, or the push of a button on remote control.

PROJECT GALLERY





## SOL'ART SHADING SYSTEM





## SOL'ART CILIAM FOLDING LOUVRE SYSTEM

SOL'ART InnoShade products combined with the RENSON Cilium folding Louvre system creating the possibility to design and realise a seamless facade that changes at the flick of a switch. Changing from a completely screened wall, to a complication with shaded windows.

PROJECT GALLERY



# COLOURS & FINISHES

---

## INNOVATIVE & PREMIUM COLOUR RANGE

INNOWOOD pre-finished product comes in your choice of either INNOVATIVE or PREMIUM Colour Ranges. The main difference between our two ranges is in the texture. The Innovative Range has a brushed texture included in the extrusion process which creates a linear grain like texture whereas the Premium Range utilises the latest technology to imitate a natural wood grain structure.



# INNOVATIVE TEXTURE COLOUR RANGE

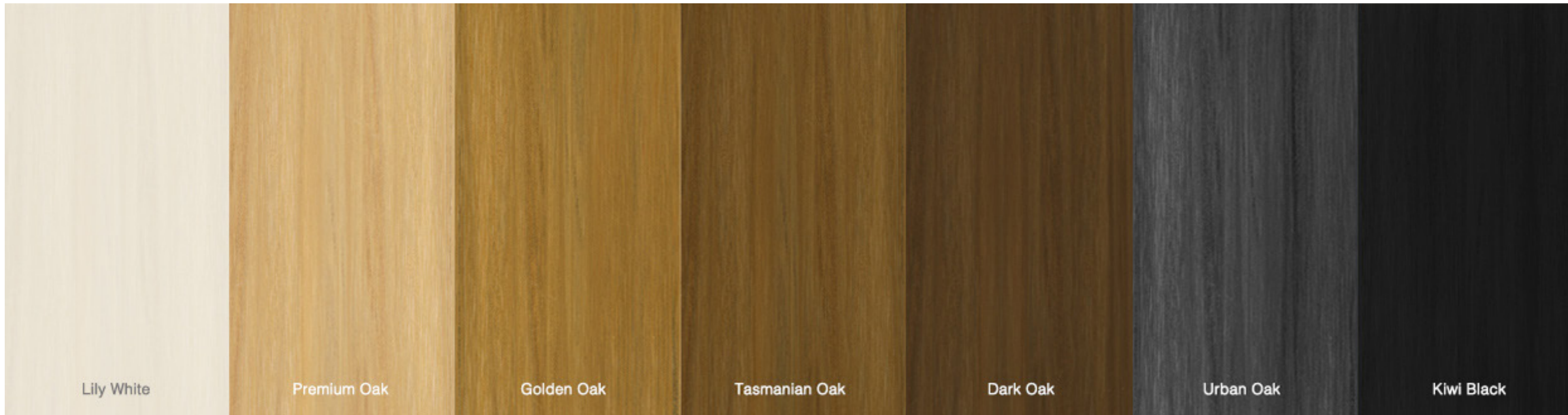
**Colour Options –**

American Oak, Iron Bark, Western Red Cedar, Spotted Gum, Teak, Weathered Wood, Ebony

**Surface Finish Options -**

Smooth, Brushed, Embossed and Embedded wood grain





## PREMIUM TEXTURE COLOUR RANGE

### **Colour Options –**

Lily White, Premium Oak, Golden Oak, Tasmanian Oak, Dark Oak, Urban Oak and Kiwi Black

### **Surface Finish Options -**

Smooth and Brushed.

# INNOWOOD PRODUCT POSSIBILITIES & MATERIAL CHARACTERISTICS

---

INNOWOOD'S material characteristics open a wide variety of possibilities. It can be used as External Cladding, Internal Lining, Outdoor Decking, Indoor Flooring, Shading, Street Furniture and Screening.

At INNOWOOD, we operate within an environment of continuous improvement and innovation. The development of our material properties, performance and texture is an ongoing process to continually improve the finishes, lifespan and colour durability of our products. To date we have been able to limit and control the thermal expansion process, thereby creating even greater stability in our materials. All INNOWOOD products may be upgraded to achieve a particular fire performance rating on request.





## CASE STUDY

---

THE INNOWOOD PRODUCT SYSTEM PROVIDES A TOTAL ARCHITECTURAL SOLUTION FOR RESIDENTIAL  
AND COMMERCIAL APPLICATIONS.





# SYDNEY WILDLIFE ZOO

## LIGHTWEIGHT & SUSTAINABLE

This was INNOWOOD's first major high profile project in 2006. Sydney Wildlife Zoo Is a unique family attraction located at Darling Harbour In the headof Sydney City. Its been over 10 years, the product still remains structurally strong and durable without any maintenance.

## ARCHITECTURAL BRIEF:

The architects originally specified the use of recycled natural hardwood timber for this project. However the weight of hardwood timber created significant structural challenges for the design and engineering of the façade. In addition, the large quantities of the timber required for the project could not be sourced in Australia at the time.

Innowoods Ceiling solution was lighter composite wood profile which reduced the façade's weight by up to 70% while preserving the natural hardwood timber look. It's unique clipping system whereby panels would simply clip into place without the need for visible screws and nails. As a result, the installation process was streamlined, delivering significant costs savings to the client.

[READ MORE](#)





## WHARF 8 & 9

WATER RESISTANT AND DURABLE

WHARF 8 & 9 IS AN ICONIC PART OF SYDNEY'S SPECTACULAR FINGER WHARF RESIDENTIAL DEVELOPMENT DIRECTLY FRONTING SYDNEY HARBOUR

The architects had the using natural timber that it would fail to withstand the harsh saltwater environment resulting from the ebb and flow of the tidal line. Innwood is tested and proven as being suitable for marine inter tidal zones and salt spray environments. This project demonstrated that INNOWOOD material is capable of delivering the ideal solution and timber alternative, even in the most challenging environment.

[READ MORE](#)





# AYERS ROCK RESORT

## MINIMAL BOARD MOVEMENT AND HIGH SLIP RESISTANCE

The INNOWOOD Premium “Fibre Deck” System is a revolutionary wood composite product that utilises a new patented technology which enhances the rigidity, durability and toughness of the decking board to achieve better performance by significantly minimising the board movement at different temperatures.

Nature-inspired embossed wood grain surface delivers the highest wet pendulum slip rating possible to create a safe, slip-resistant surface. Premium Decking looks and feels like natural timber but delivers superior performance. It does not crack, decay, split, mould. It’s also termite and water resistant. Innwood Decking is light weight and therefore has a significant cost advantage over natural timber.







## GU FILM HOUSE PROJECT – SOUTH AUSTRALIA

### FIRE PERFORMANCE

The architect for this project specified a timber ceiling that would satisfy both safety and aesthetic requirements. The ceiling had to have a GROUP 1 fire rating under Building Code of Australia (BCA) while simultaneously offering a sophisticated modern design that would incorporate the building's lighting requirements.

INNWOOD's custom made ceiling products enabled the architect of the GU Film House project at Glenelg in South Australia to achieve the elegant interior look he had envisioned for the project while simultaneously meeting the required GROUP 1 fire rating.

[READ MORE](#)







[www.innowood.com](http://www.innowood.com)